

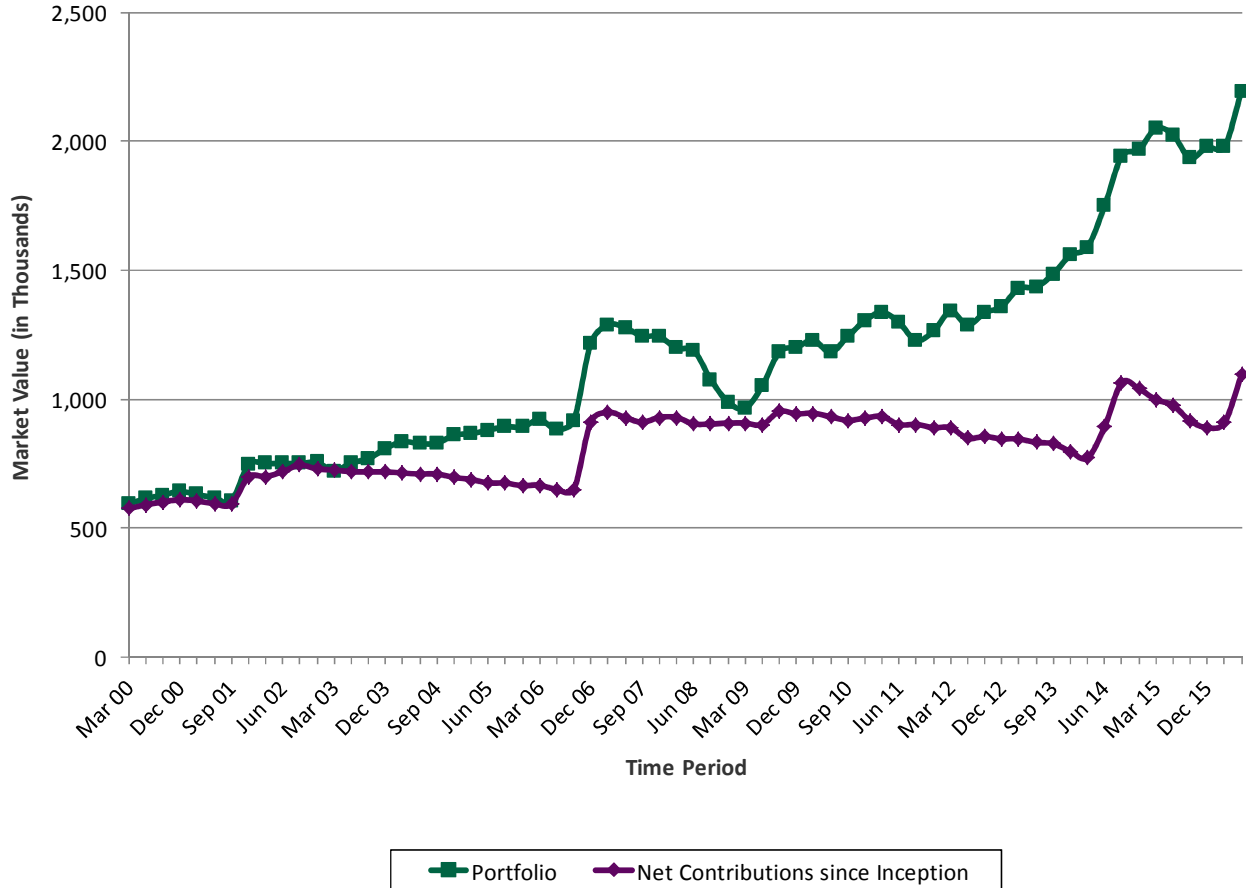
HISTORICAL ACTIVITY SUMMARY
Community Foundation of Orillia and Area - Combined
 June 30, 2016

Activity Summary for the Quarter

Portfolio Value on March 31, 2016	1,977,604
Contributions	229,059
Withdrawals	-42,556
Trading Impact	1,268
Market Impact	20,919
Interest/Dividends/Distributions	11,962
Management Fees	-3,572
Portfolio Value on June 30, 2016	2,194,685

Note: To permit timely delivery of your report, we use the last available unit price for the alternative investments. Therefore, readers are cautioned that once the actual price is available, the portfolio values reported above will be updated accordingly.

Portfolio Value relative to Net Contributions



PERFORMANCE SUMMARY

Community Foundation of Orillia and Area - Combined

June 30, 2016

Performance Detail

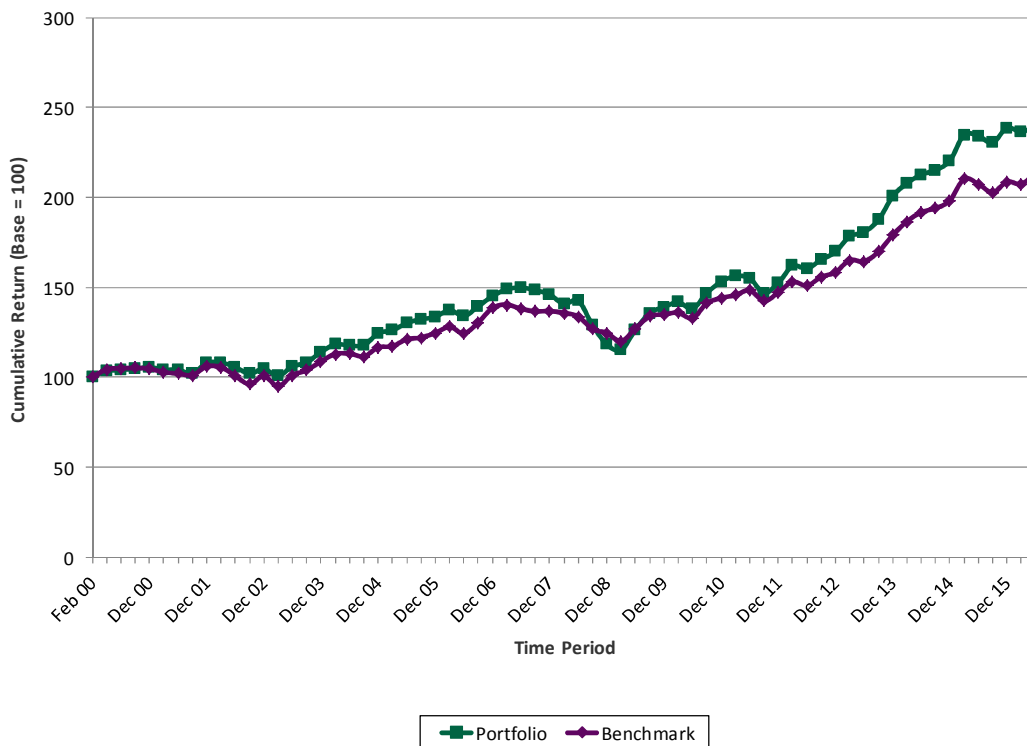
	QTD	YTD	1 Yr	2 Yr	3 Yr	4 Yr	5 Yr	10 Yr	Since Inception
Community Foundation of Orillia and Area - Combined	1.5	0.5	2.5	6.3	10.0	10.6	9.1	6.0	5.5
Benchmark (1)	2.8	2.2	2.8	5.5	9.1	9.1	7.6	5.6	4.7
FTSE TMX Canada 91-day T-bill Index	0.1	0.3	0.5	0.7	0.8	0.8	0.9	1.6	2.3
FTSE TMX Canada Universe Bond Index	2.6	4.0	5.2	5.7	5.6	4.1	5.2	5.6	6.2
S&P/TSX Composite Index	5.1	9.8	-0.2	-0.7	8.3	8.2	4.2	4.9	5.0
MSCI World ex-Cda Index (C\$)	1.5	-6.0	1.9	10.8	15.6	17.7	14.3	6.8	3.0

Start Date **Benchmark**

- (1) 06-23-2011 5% FTSE TMX Canada 91-day T-bill Index & 40% FTSE TMX Canada Universe Bond Index & 25% S&P/TSX Composite Index & 30% MSCI World ex-Cda Index (C\$)
- 03-20-2002 55% FTSE TMX Canada Universe Bond Index & 45% MSCI World Index (C\$)
- 02-16-2000 65% FTSE TMX Canada Universe Bond Index & 35% MSCI World Index (C\$)

NB: Performance returns are annualized (for periods greater than 1 year) and net of fees.
The start date for performance calculations is February 16, 2000.

Performance relative to Benchmark



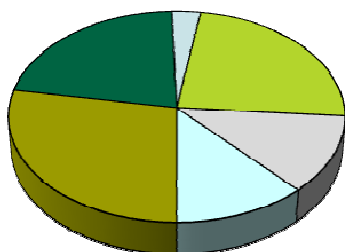
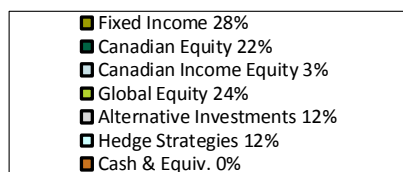
Connor, Clark & Lunn Private Capital Ltd.
PORTFOLIO SUMMARY
Community Foundation of Orillia and Area - Combined
 June 30, 2016

Portfolio Holdings

Asset Class	03-31-16 Market Value	06-30-16 Market Value
Fixed Income	547,975	614,885
Canadian Equity	430,765	482,000
Canadian Income Equity	62,892	72,474
Global Equity	476,040	519,719
Alternative Investments	231,756	262,848
Hedge Strategies	232,021	246,812
Cash & Equiv.	-3,845	-4,052
Total	1,977,604	2,194,685

Note: To permit timely delivery of your report, we use the last available unit price for the alternative investments. Therefore, readers are cautioned that once the actual price is available, the portfolio values reported above will be updated accordingly.

Previous Quarter Holdings



Current Quarter Holdings

