

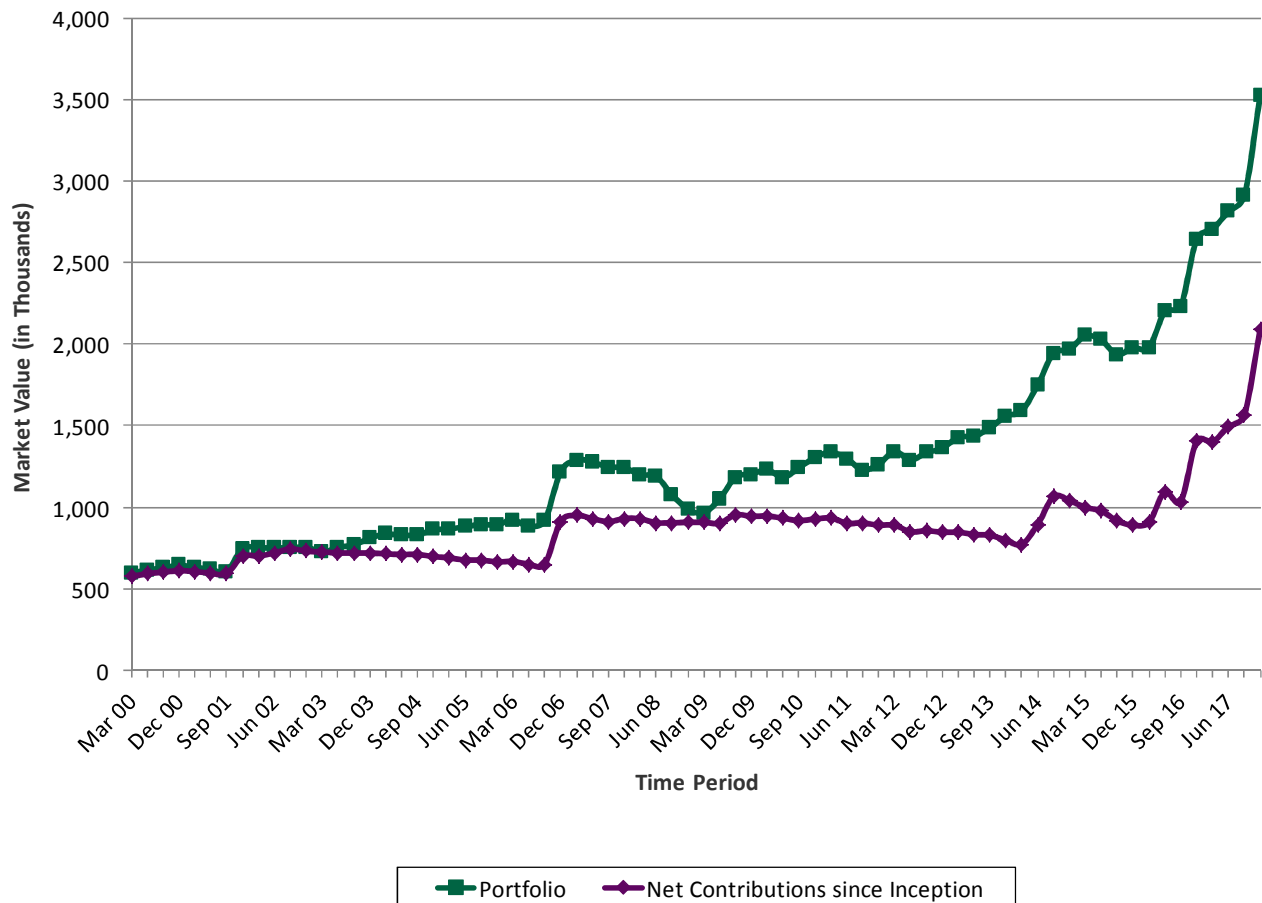
**HISTORICAL ACTIVITY SUMMARY**  
**Community Foundation of Orillia and Area - Combined**  
 December 31, 2017

**Activity Summary for the Quarter**

Portfolio Value on September 30, 2017	2,909,055
Contributions	560,531
Withdrawals	-36,504
Net Transfers	1,651
Trading Impact	2,914
Market Impact	34,438
Interest/Dividends/Distributions	59,564
Management Fees	-5,477
<b>Portfolio Value on December 31, 2017</b>	<b>3,526,171</b>

Note: To permit timely delivery of your report, we use the last available unit price for the alternative investments. Therefore, readers are cautioned that once the actual price is available, the portfolio values reported above will be updated accordingly.

**Portfolio Value relative to Net Contributions**



**PERFORMANCE SUMMARY**

**Community Foundation of Orillia and Area - Combined**

December 31, 2017

**Performance Detail**

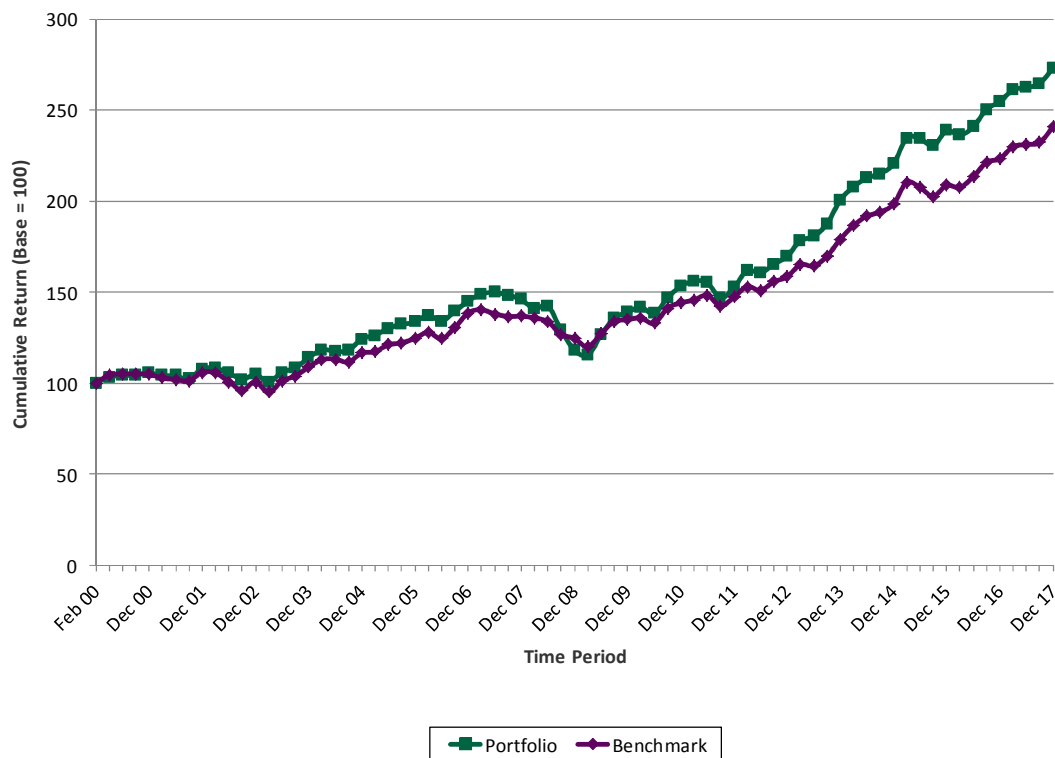
	QTD	YTD	1 Yr	2 Yr	3 Yr	4 Yr	5 Yr	10 Yr	Since Inception
<b>Community Foundation of Orillia and Area - Combined</b>	<b>3.2</b>	<b>7.3</b>	<b>7.3</b>	<b>6.9</b>	<b>7.4</b>	<b>8.0</b>	<b>10.0</b>	<b>6.5</b>	<b>5.8</b>
Benchmark (1)	3.7	7.8	7.8	7.4	6.7	7.7	8.7	5.8	5.0
FTSE TMX Canada 91-day T-bill Index	0.2	0.6	0.6	0.5	0.6	0.7	0.7	1.0	2.1
FTSE TMX Canada Universe Bond Index	2.0	2.5	2.5	2.1	2.6	4.1	3.0	4.7	5.6
S&P/TSX Composite Index	4.5	9.1	9.1	14.9	6.6	7.6	8.6	4.6	5.7
MSCI World ex-Cda Index (C\$)	5.9	15.2	15.2	9.4	13.0	13.6	17.9	8.3	4.1

**Start Date Benchmark**

- (1) 06-23-2011 5% FTSE TMX Canada 91-day T-bill Index & 40% FTSE TMX Canada Universe Bond Index & 25% S&P/TSX Composite Index & 30% MSCI World ex-Cda Index (C\$)
- 03-20-2002 55% FTSE TMX Canada Universe Bond Index & 45% MSCI World Index (C\$)
- 02-16-2000 65% FTSE TMX Canada Universe Bond Index & 35% MSCI World Index (C\$)

NB: Performance returns are annualized (for periods greater than 1 year) and net of fees.  
The start date for performance calculations is February 16, 2000.

**Performance relative to Benchmark**



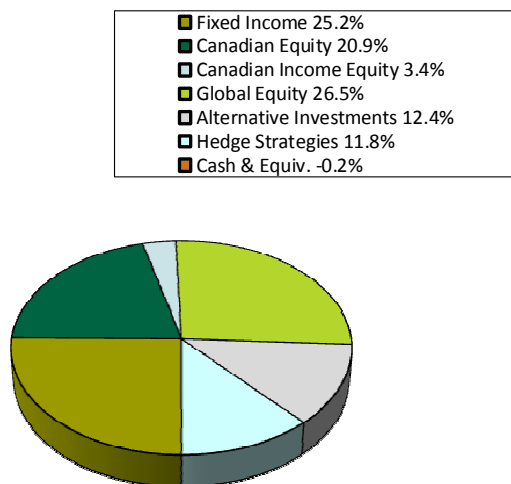
Connor, Clark & Lunn Private Capital Ltd.  
**PORTFOLIO SUMMARY**  
*Community Foundation of Orillia and Area - Combined*  
 December 31, 2017

## Portfolio Holdings

Asset Class	09-30-17 Market Value	12-31-17 Market Value
Fixed Income	733,179	895,154
Canadian Equity	606,982	751,281
Canadian Income Equity	99,262	123,000
Global Equity	772,273	970,352
Alternative Investments	359,354	375,726
Hedge Strategies	343,601	416,755
Cash & Equiv.	-5,597	-6,099
<b>Total</b>	<b>2,909,055</b>	<b>3,526,171</b>

Note: To permit timely delivery of your report, we use the last available unit price for the alternative investments. Therefore, readers are cautioned that once the actual price is available, the portfolio values reported above will be updated accordingly.

## Previous Quarter Holdings



## Current Quarter Holdings

