

PERFORMANCE SUMMARY

Community Foundation of Orillia and Area - Combined

December 31, 2018

Performance Detail

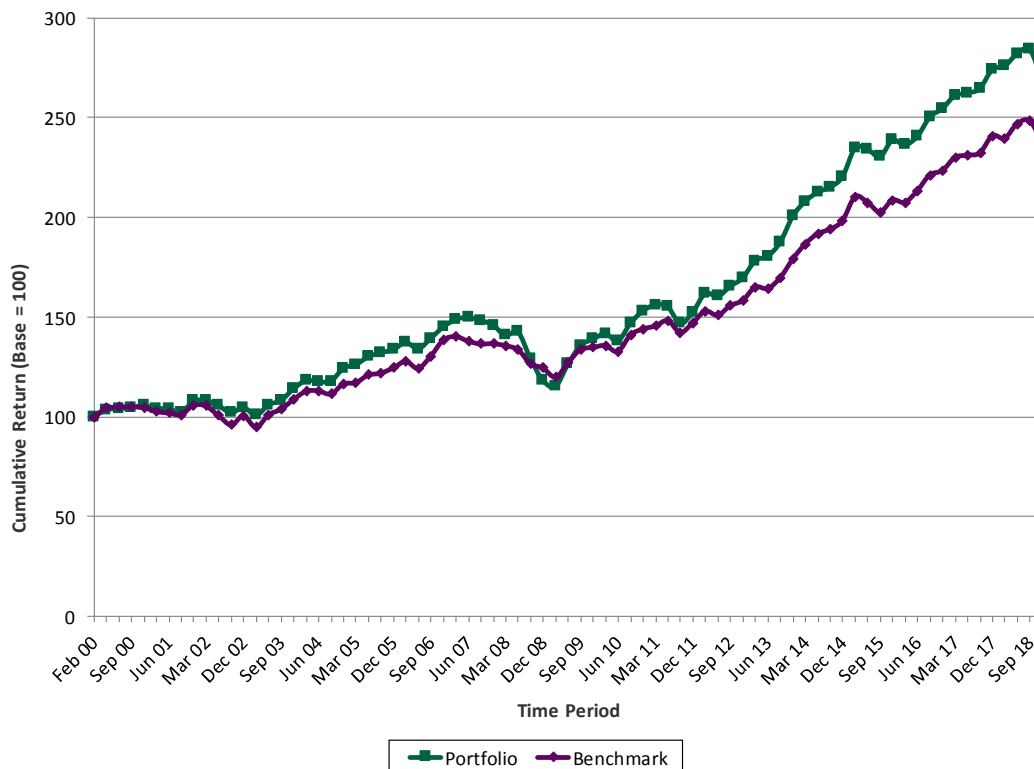
	QTD	YTD	1 Yr	2 Yr	3 Yr	4 Yr	5 Yr	10 Yr	Since Inception
Community Foundation of Orillia and Area - Combined	-5.4	-2.0	-2.0	2.8	4.0	5.1	6.0	8.6	5.4
Benchmark (1)	-4.4	-1.4	-1.4	3.1	4.4	4.6	5.8	6.7	4.7
FTSE TMX Canada 91-day T-bill Index	0.5	1.4	1.4	1.0	0.8	0.8	0.8	0.8	2.1
FTSE TMX Canada Universe Bond Index	1.8	1.4	1.4	2.0	1.9	2.3	3.5	4.2	5.4
S&P/TSX Composite Index	-10.1	-8.9	-8.9	-0.3	6.4	2.5	4.1	7.9	4.8
MSCI World ex-Cda Index (C\$)	-8.3	0.4	0.4	7.5	6.3	9.7	10.8	11.6	3.9

Start Date Benchmark

- (1) 06-23-2011 5% FTSE TMX Canada 91-day T-bill Index & 40% FTSE TMX Canada Universe Bond Index & 25% S&P/TSX Composite Index & 30% MSCI World ex-Cda Index (C\$)
- 03-20-2002 55% FTSE TMX Canada Universe Bond Index & 45% MSCI World Index (C\$)
- 02-16-2000 65% FTSE TMX Canada Universe Bond Index & 35% MSCI World Index (C\$)

NB: Performance returns are annualized (for periods greater than 1 year) and net of fees.
The start date for performance calculations is February 16, 2000.

Performance relative to Benchmark



PORTFOLIO SUMMARY

Community Foundation of Orillia and Area - Combined

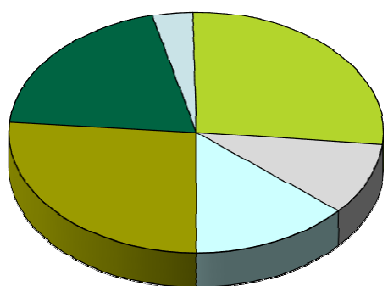
December 31, 2018

Portfolio Holdings

Asset Class	09-30-18 Market Value	12-31-18 Market Value
Fixed Income	1,023,889	1,144,556
Canadian Equity	770,930	826,430
Canadian Income Equity	136,699	148,687
Global Equity	1,049,337	1,148,886
Alternative Investments	376,976	407,621
Hedge Strategies	533,450	564,132
Cash & Equiv.	-7,653	-7,609
Total	3,883,628	4,232,703

Note: To permit timely delivery of your report, we use the last available unit price for the alternative investments. Therefore, readers are cautioned that once the actual price is available, the portfolio values reported above will be updated accordingly.

Previous Quarter Holdings



Current Quarter Holdings

