

**PERFORMANCE SUMMARY**

**Community Foundation of Orillia and Area - Combined**

March 31, 2018

**Performance Detail**

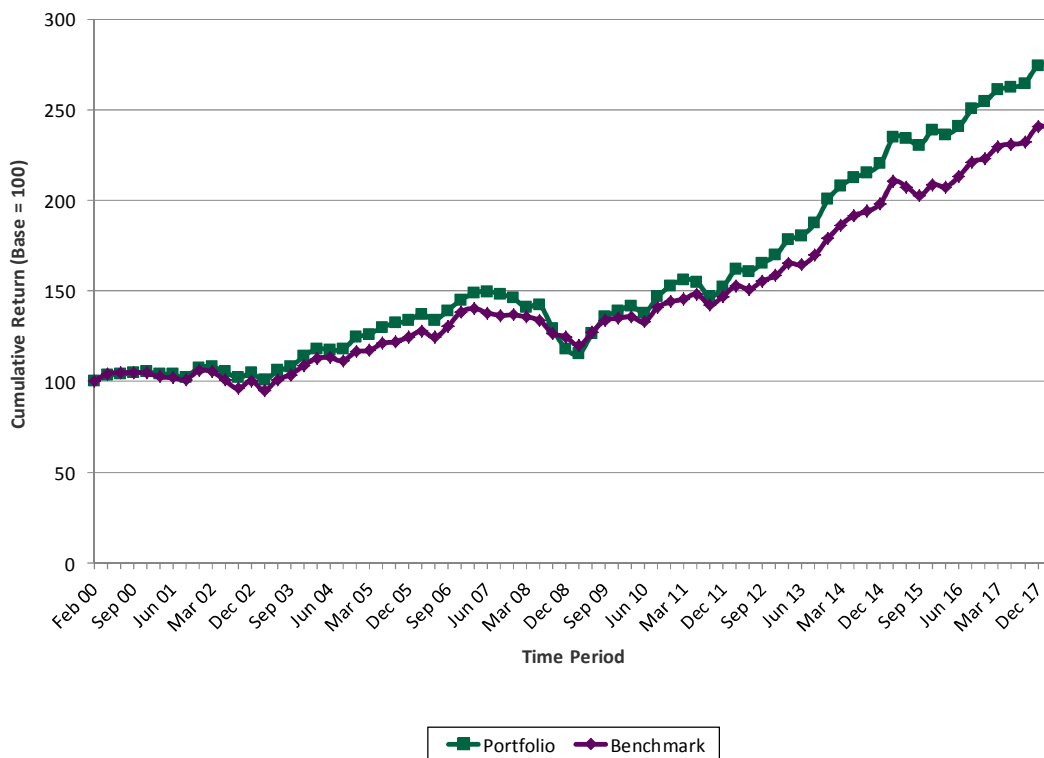
	QTD	YTD	1 Yr	2 Yr	3 Yr	4 Yr	5 Yr	10 Yr	Since Inception
<b>Community Foundation of Orillia and Area - Combined</b>	<b>0.4</b>	<b>0.4</b>	<b>5.4</b>	<b>7.9</b>	<b>5.4</b>	<b>7.3</b>	<b>9.1</b>	<b>6.9</b>	<b>5.7</b>
Benchmark (1)	-0.5	-0.5	4.2	7.5	4.4	6.4	7.7	5.8	4.9
FTSE TMX Canada 91-day T-bill Index	0.3	0.3	0.8	0.6	0.6	0.7	0.7	0.9	2.1
FTSE TMX Canada Universe Bond Index	0.1	0.1	1.4	1.4	1.2	3.4	2.9	4.4	5.6
S&P/TSX Composite Index	-4.5	-4.5	1.7	9.8	4.1	4.8	6.9	4.5	5.3
MSCI World ex-Cda Index (C\$)	1.9	1.9	10.7	14.8	9.4	12.6	16.0	9.2	4.1

**Start Date    Benchmark**

- (1) 06-23-2011 5% FTSE TMX Canada 91-day T-bill Index & 40% FTSE TMX Canada Universe Bond Index & 25% S&P/TSX Composite Index & 30% MSCI World ex-Cda Index (C\$)
- 03-20-2002 55% FTSE TMX Canada Universe Bond Index & 45% MSCI World Index (C\$)
- 02-16-2000 65% FTSE TMX Canada Universe Bond Index & 35% MSCI World Index (C\$)

NB: Performance returns are annualized (for periods greater than 1 year) and net of fees.  
The start date for performance calculations is February 16, 2000.

**Performance relative to Benchmark**



**PORTFOLIO SUMMARY**

*Community Foundation of Orillia and Area - Combined*

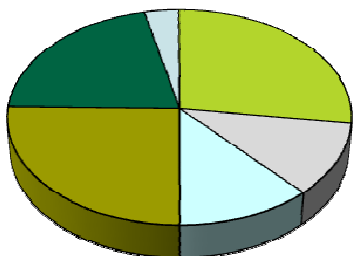
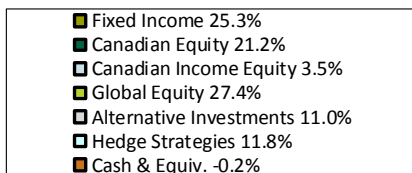
March 31, 2018

**Portfolio Holdings**

Asset Class	12-31-17 Market Value	03-31-18 Market Value
Fixed Income	895,154	937,787
Canadian Equity	751,281	714,224
Canadian Income Equity	123,000	117,429
Global Equity	970,352	930,260
Alternative Investments	388,179	392,217
Hedge Strategies	416,755	454,793
Cash & Equiv.	-6,099	-7,074
<b>Total</b>	<b>3,538,624</b>	<b>3,539,637</b>

Note: To permit timely delivery of your report, we use the last available unit price for the alternative investments. Therefore, readers are cautioned that once the actual price is available, the portfolio values reported above will be updated accordingly.

**Previous Quarter Holdings**



**Current Quarter Holdings**

