

PERFORMANCE SUMMARY

Community Foundation of Orillia and Area - Combined

March 31, 2019

Performance Detail

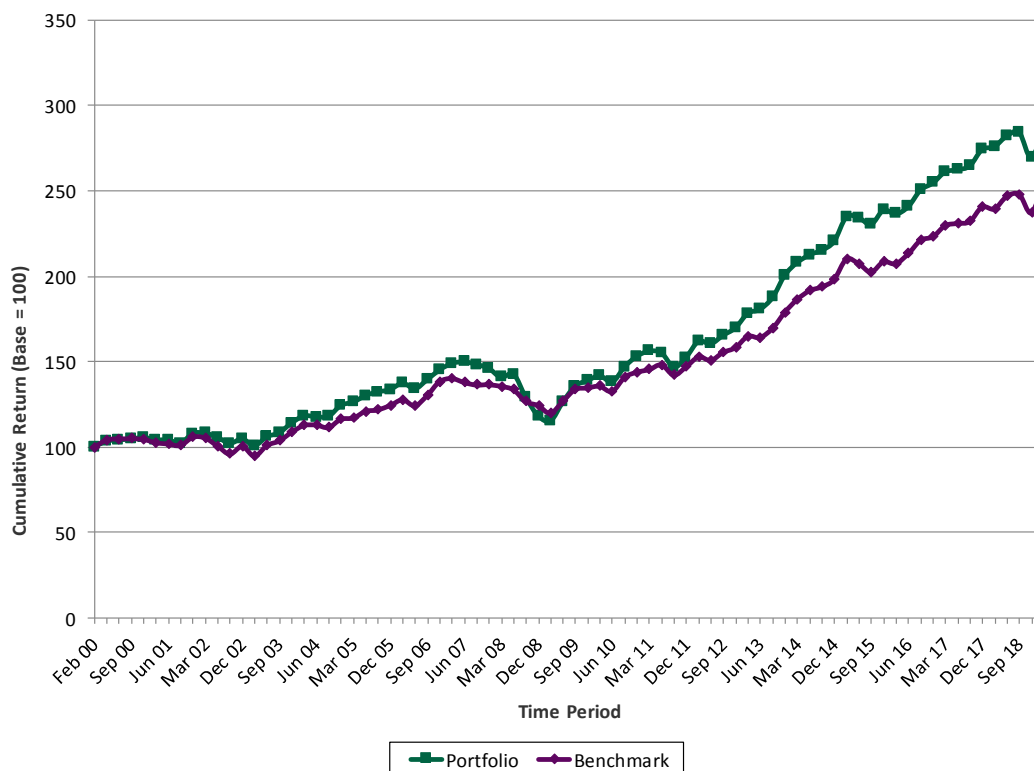
	QTD	YTD	1 Yr	2 Yr	3 Yr	4 Yr	5 Yr	10 Yr	Since Inception
Community Foundation of Orillia and Area - Combined	7.0	7.0	4.4	5.0	6.8	5.3	6.7	9.6	5.7
Benchmark (1)	7.9	7.9	6.9	5.6	7.3	5.1	6.5	7.9	5.0
FTSE Canada 91-day T-bill Index	0.4	0.4	1.5	1.1	0.9	0.8	0.8	0.8	2.1
FTSE Canada Universe Bond Index	3.9	3.9	5.3	3.3	2.7	2.2	3.8	4.4	5.6
S&P/TSX Composite Index	13.3	13.3	8.1	4.9	9.3	5.1	5.4	9.5	5.5
MSCI World ex-Cda Index (C\$)	10.1	10.1	8.4	9.6	12.6	9.2	11.8	13.9	4.4

Start Date Benchmark

- (1) 06-23-2011 5% FTSE Canada 91-day T-bill Index & 40% FTSE Canada Universe Bond Index & 25% S&P/TSX Composite Index & 30% MSCI World ex-Cda Index (C\$)
- 03-20-2002 55% FTSE Canada Universe Bond Index & 45% MSCI World Index (C\$)
- 02-16-2000 65% FTSE Canada Universe Bond Index & 35% MSCI World Index (C\$)

NB: Performance returns are annualized (for periods greater than 1 year) and net of fees.
The start date for performance calculations is February 16, 2000.

Performance relative to Benchmark



PORTFOLIO SUMMARY

Community Foundation of Orillia and Area - Combined

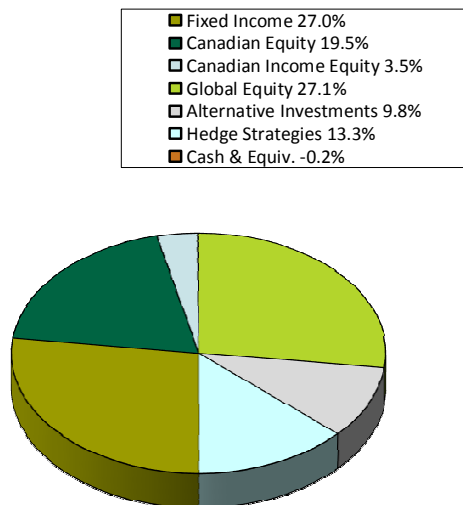
March 31, 2019

Portfolio Holdings

Asset Class	12-31-18 Market Value	03-31-19 Market Value
Fixed Income	1,144,556	1,177,809
Canadian Equity	826,430	895,945
Canadian Income Equity	148,687	160,147
Global Equity	1,148,886	1,257,863
Alternative Investments	413,585	444,040
Hedge Strategies	564,132	579,899
Cash & Equiv.	-7,609	-8,704
Total	4,238,667	4,506,999

Note: To permit timely delivery of your report, we use the last available unit price for the alternative investments. Therefore, readers are cautioned that once the actual price is available, the portfolio values reported above will be updated accordingly.

Previous Quarter Holdings



Current Quarter Holdings

