

PERFORMANCE SUMMARY

Community Foundation of Orillia and Area - Combined

September 30, 2018

Performance Detail

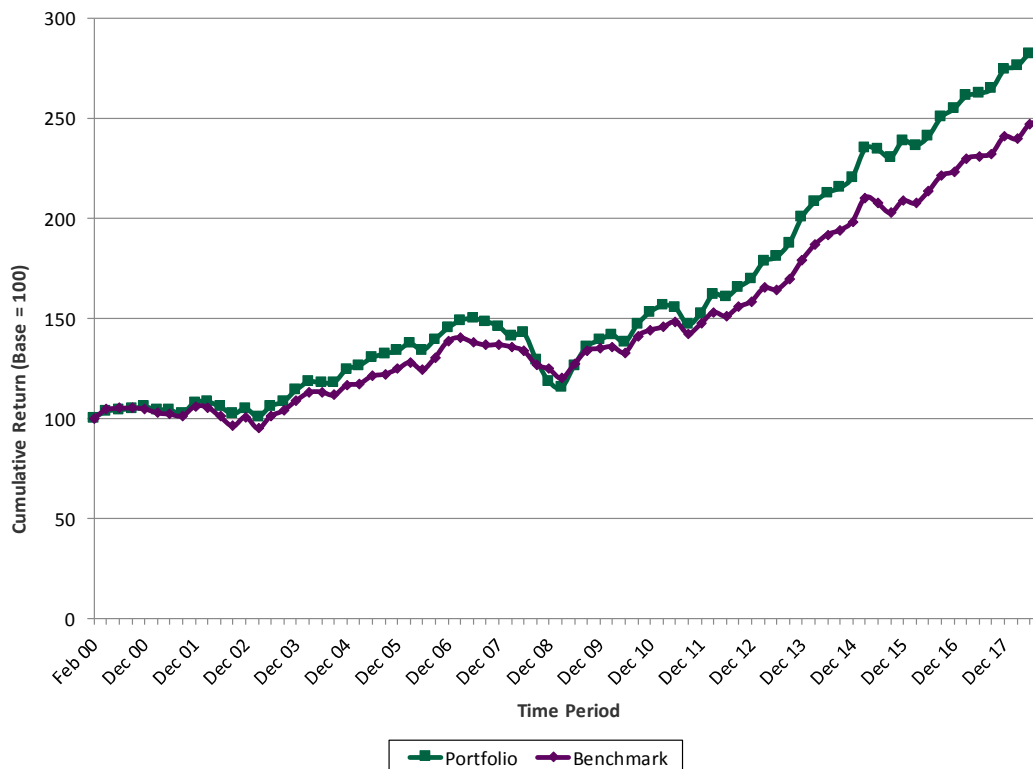
	QTD	YTD	1 Yr	2 Yr	3 Yr	4 Yr	5 Yr	10 Yr	Since Inception
Community Foundation of Orillia and Area - Combined	0.5	3.4	7.2	6.4	7.2	7.1	8.6	8.2	5.8
Benchmark (1)	0.5	3.1	6.9	5.9	7.0	6.4	7.9	6.9	5.0
FTSE TMX Canada 91-day T-bill Index	0.3	0.9	1.2	0.8	0.7	0.7	0.8	0.8	2.1
FTSE TMX Canada Universe Bond Index	-1.0	-0.4	1.7	-0.7	1.6	2.5	3.3	4.4	5.4
S&P/TSX Composite Index	-0.6	1.4	5.9	7.5	9.7	4.9	7.8	6.3	5.5
MSCI World ex-Cda Index (C\$)	3.4	9.5	15.9	14.6	12.9	13.5	15.3	11.6	4.4

Start Date Benchmark

- (1) 06-23-2011 5% FTSE TMX Canada 91-day T-bill Index & 40% FTSE TMX Canada Universe Bond Index & 25% S&P/TSX Composite Index & 30% MSCI World ex-Cda Index (C\$)
- 03-20-2002 55% FTSE TMX Canada Universe Bond Index & 45% MSCI World Index (C\$)
- 02-16-2000 65% FTSE TMX Canada Universe Bond Index & 35% MSCI World Index (C\$)

NB: Performance returns are annualized (for periods greater than 1 year) and net of fees.
The start date for performance calculations is February 16, 2000.

Performance relative to Benchmark



PORTFOLIO SUMMARY

Community Foundation of Orillia and Area - Combined

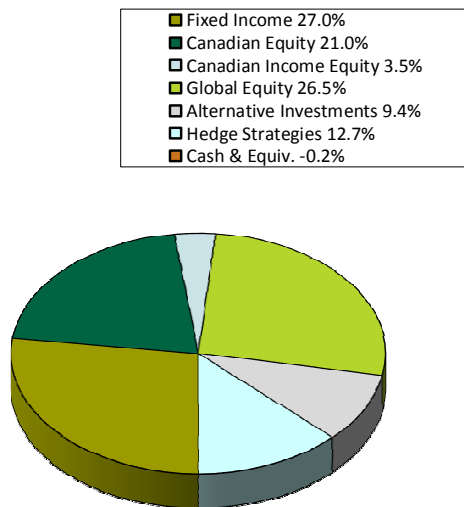
September 30, 2018

Portfolio Holdings

Asset Class	06-30-18 Market Value	09-30-18 Market Value
Fixed Income	1,034,810	1,023,889
Canadian Equity	802,919	770,930
Canadian Income Equity	135,581	136,699
Global Equity	1,015,694	1,049,337
Alternative Investments	361,895	372,091
Hedge Strategies	488,137	533,450
Cash & Equiv.	-7,223	-7,653
Total	3,831,813	3,878,743

Note: To permit timely delivery of your report, we use the last available unit price for the alternative investments. Therefore, readers are cautioned that once the actual price is available, the portfolio values reported above will be updated accordingly.

Previous Quarter Holdings



Current Quarter Holdings

